

MAY 6 2010

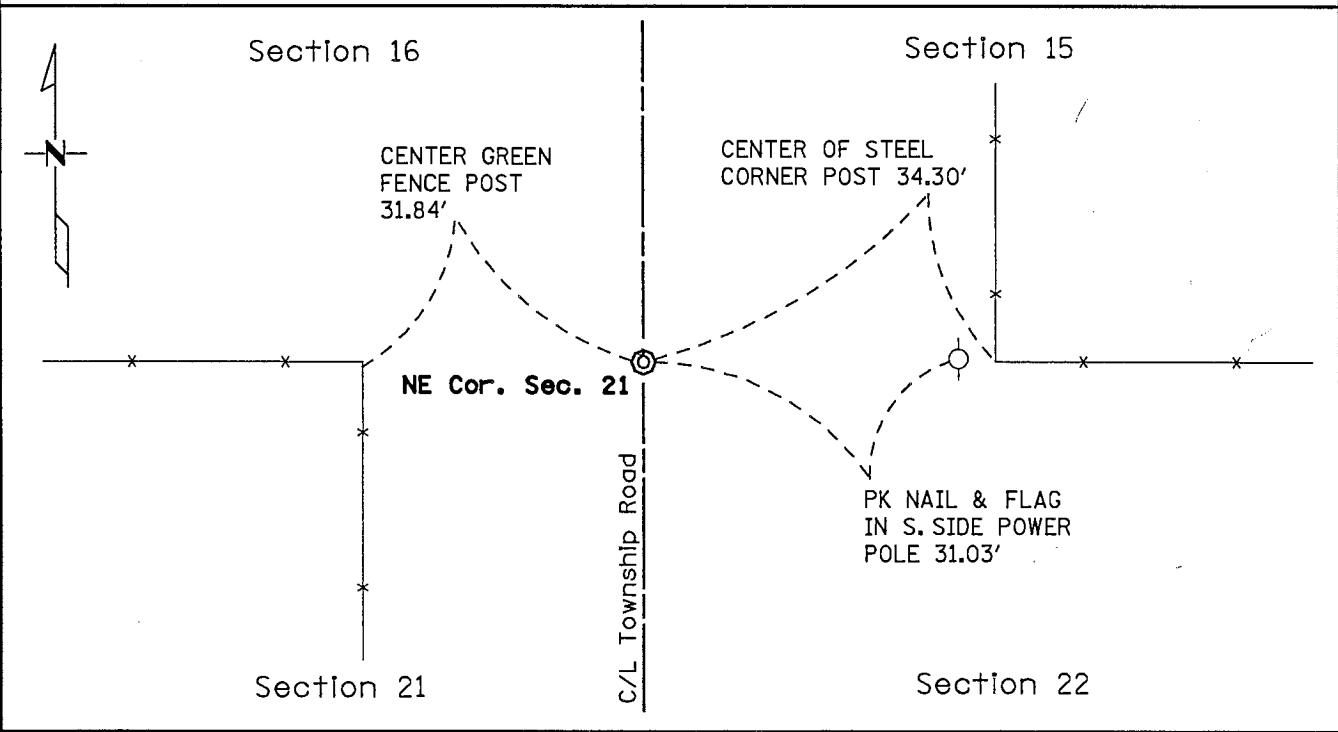
James V. Johnson

# CERTIFICATE OF LOCATION OF GOVERNMENT CORNER

NORTHEAST Corner of Section 21, Township 107, Range 41  
5th Principal Meridian, State of Minnesota, County of MURRAY

At the corner location shown on the sketch:

- On JULY 27, 2009 found an Minnesota Dept. of Transportation Cast Iron Monument  
DATE
- left monument as found     lowered monument     removed monument (explain)
- On \_\_\_\_\_ placed a \_\_\_\_\_  
DATE



Statement of evidence for this corner location is on back of this page.

I hereby certify that this document was researched and prepared by me or under my direct supervision.

Signature Matthew J. Schlager Date 4-26-2010 License No. 24640  
 Title:     Land Surveyor     Professional Engineer     County Surveyor     County Engineer

## Certificate of Location of Government Corner

Northeast Corner, Section 21, Township 107 North, Range 41 West

July 2009

A Mn/DOT survey crew, (crew chief Jeff Balbach) found the Minnesota Department of Transportation Cast Iron Monument placed by Duane Bonnema in 1989. The chain ties were updated.

For a more complete history of this corner, refer to the Certificate of Location of Government Corner Document filed with the Murray County Recorder on March 1, 1991.